



The North Face® Women's Barr Lake Soft Shell Jacket NF0A8C5C



Ready to perform on those high-energy days when dark clouds look ominous, the multi-purpose Barr Lake Soft Shell features two-way mechanical stretch, WindWall™ fabric and an adjustable hem.

- 310 g/m2 WindWall™ -50/50 recycled polyester/polyester with non-PFC durable water-repellent (DWR) finish
- Two-way mechanical stretch
- Interior locker loop at back of neckline
- Raglan sleeves for better mobility
- Exposed Vislon® center front zipper with zipper garage at neck
- Exposed zippered hand pockets
- Draw cord with cord lock at hem for adjustability
- Contrast heat transfer The North Face logo on left chest and right back shoulder

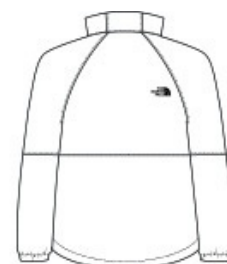
**

CARE INSTRUCTIONS

Machine Wash Warm Gentle Cycle. Wash Inside Out And Separately. Close All Fasteners Before Washing. Wash With Mild Detergent. Rinse Well. Do Not Bleach. Tumble Dry Low. Do Not Iron. Do Not Dry Clean.

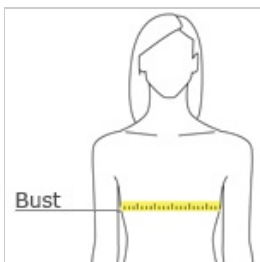


front



back

HOW TO MEASURE



BUST

Measure under the arm and around the fullest part of the bust with arms down, keeping tape horizontal.

SIZE CHART

	S	M	L	XL	2XL
Size	4/6	8/10	12/14	16/18	20/22
Bust	33-35	36-38	39-41	42/44	45-48

COLOR INFORMATION



Asphalt Grey Dark Heather
PMS Black 7C



Khaki Stone Dark Heather



Shady Blue Dark Heather
PMS 2380C



TNF Black Heather
PMS Black C